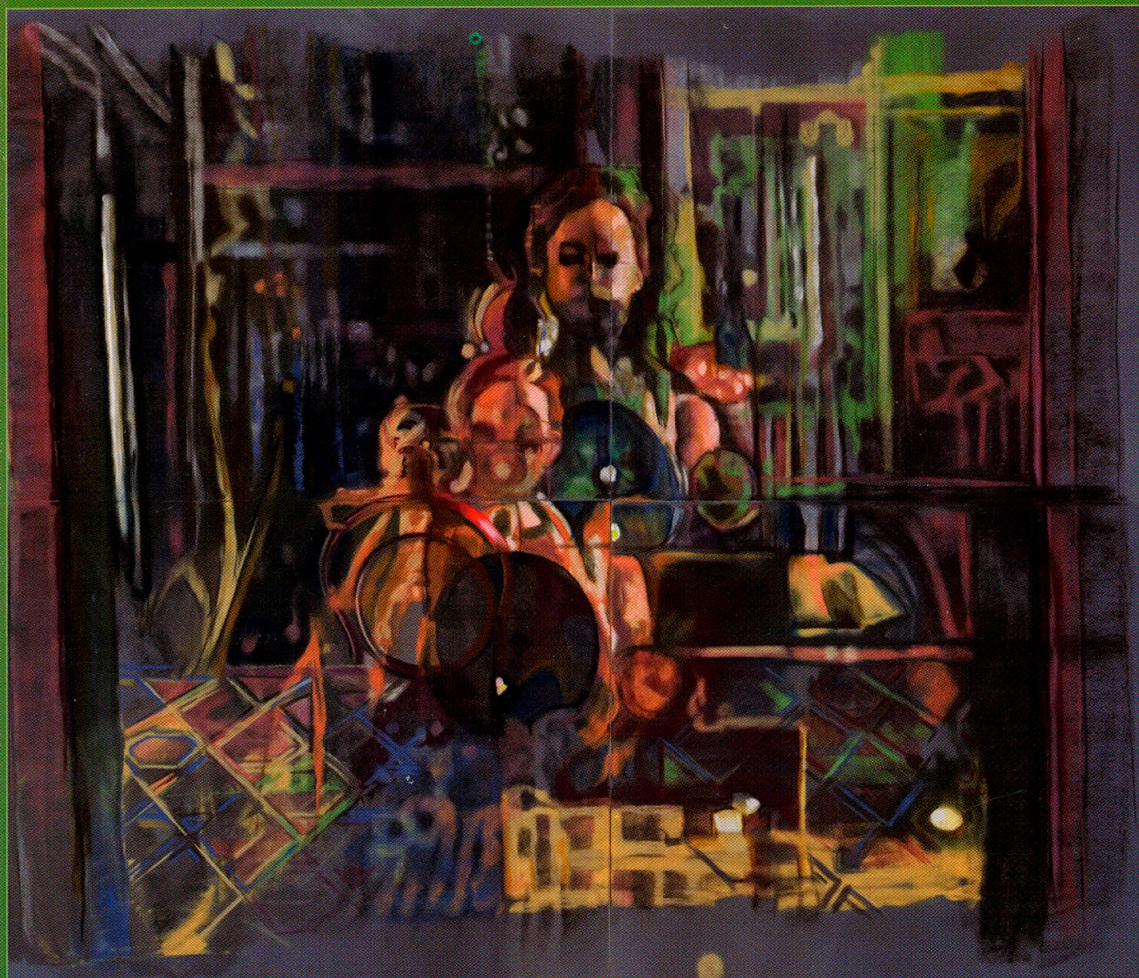


1st European COST Action 866 conference

**Green care in Agriculture:
Health effects, Economics and Policies**



cost

Editor: Dr Christos Gallis

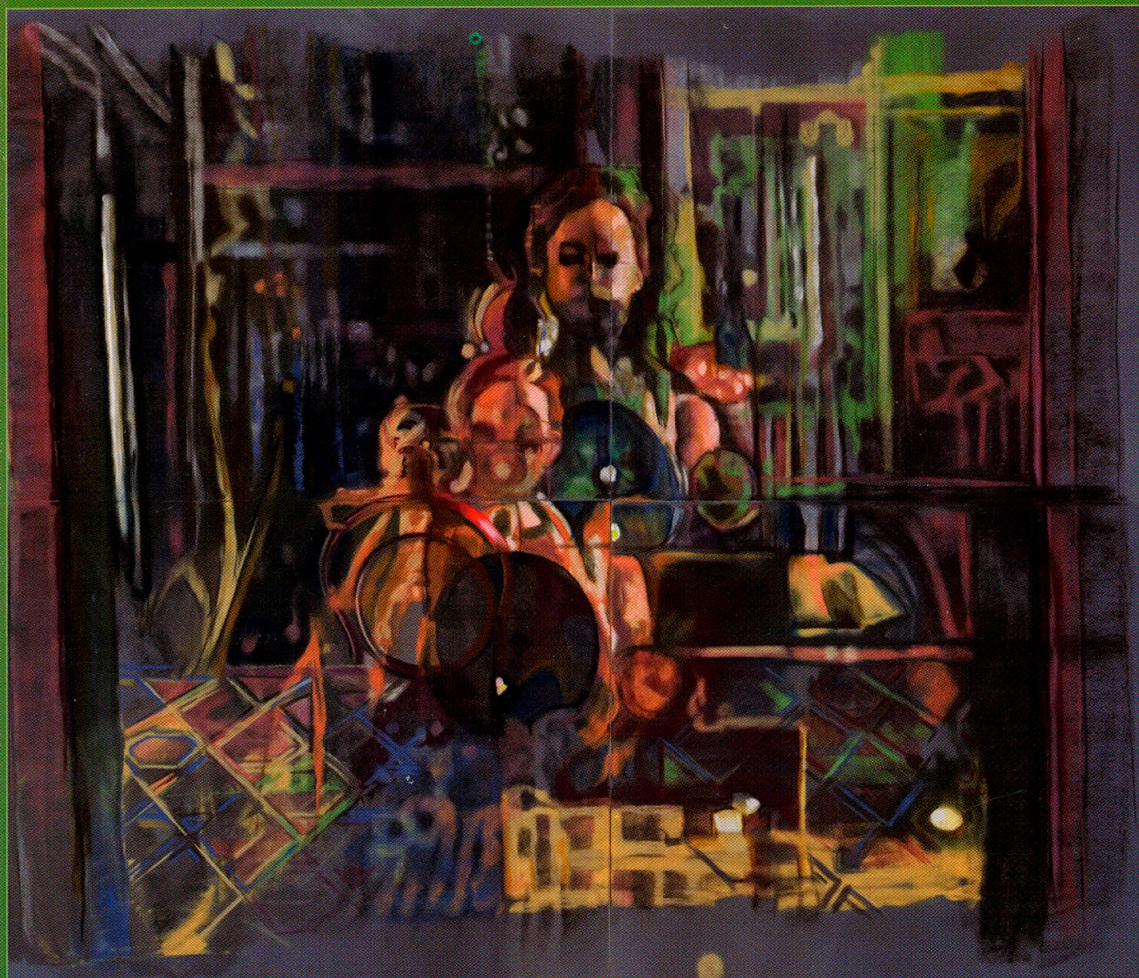
Proceedings

Vienna, Austria 2007

 **UNIVERSITY STUDIO PRESS**

1st European COST Action 866 conference

**Green care in Agriculture:
Health effects, Economics and Policies**



cost

Editor: Dr Christos Gallis

Proceedings

Vienna, Austria 2007

UNIVERSITY STUDIO PRESS



UNIVERSITY STUDIO PRESS

Publishers of Academic Books and Journals

First published: Thessaloniki 2007

ISBN 978-960-12-1655-3

Copyright of contents in this publication are governed under international copyright conventions and by the legislation of Greece. Copyright of each individual article rests on its author(s). Copyright of composition and compilation of this book belongs to its editor and publisher. The publisher, represented by University Studio Press, Thessaloniki, Greece, is entitled to grant permissions to reproduce all of, and portions of, the material here printed.

Printed and bound in Greece by the UNIVERSITY STUDIO PRESS

© **Dr CHRISTOS TH. GALLIS**

27, Kalapothaki Str., 552 36 Thessaloniki, Greece

Tel. +30 2310/340045 & +30 2932/255292 • E-mail: cgalis@Fri.gr

© **UNIVERSITY STUDIO PRESS**

32, Armenopoulou Str., GR - 54635 THESSALONIKI

Tel. +30 2310/208731, 209637, 209837 Fax 216647 – e-mail: univstud@spark.net.gr

STOA TOU BIBLIOU – 5, Pasmazoglou Str., GR - 10564 ATHENS – Tel. & Fax +30 210/3211097

Local Organizing committee

Austrian Horticultural Society (ÖGG):

DI Eva Thun-Täubert, Executive Committee

DI Birgit Steininger, Verena Andraschko, Monika Vrbancic,

DI Dr Peter Fischer-Colbrie

Scientific committee

Prof. Bjarne O. Braastad (Chair), Research group Nature, Health and Quality of Life,
Norwegian University of Life Sciences, Norway

Dr Christos Gallis (Vice-Chair), Forest Research Institute, National Agricultural Research
Foundation, Thessaloniki, Greece

Dr Joe Sempik (Chair WG 1), Centre for Child and Family Research, Department of Social
Sciences, Loughborough University, United Kingdom

Prof. Saverio Senni (Chair WG 2), Dep. of Agricultural and Forestry Economics, Faculty of
Agriculture, Tuscia University, Viterbo, Italy

Dr Thomas van Elsen (Chair WG 3), Standort Witzenhausen, Research Institute of Organic
Agriculture (FiBL), Witzenhausen, Germany



COST is an intergovernmental European framework for international cooperation between nationally funded research activities. COST creates scientific networks and enables scientists to collaborate in a wide spectrum of activities in research and technology. COST activities are administered by the COST Office.

Cover page: *Johanna Ehrnrooth, "En face", 120 X 160 cm, pastel on paper, 2005.*
Private collection, Helsinki, Finland.

CONTENTS

COST ACTION 866 “GREEN CARE IN AGRICULTURE” – A MULTI-DISCIPLINARY SCIENTIFIC NETWORK

Bjarne Braastad, Christos Gallis, Joe Sempik, Saverio Senni, Thomas van Elsen ... 13

EDUCATION FOR SUSTAINABLE DEVELOPMENT – INVESTING IN THE FUTURE

Inge Schenk 25

GREEN CARE IN THE FRAMEWORK OF HEALTH PROMOTION

Erja Rappe 33

SOCIAL FARMING: THE HISTORY OF THE NON-PROFIT SOCIETY FOR AGRICULTURAL RESEARCH WEIDE-HARDEBEK

Hartwig Ehlers 41

PATHWAYS OF CHANGE IN SOCIAL FARMING: HOW TO BUILD NEW POLICIES

Francesco di Iacovo 55

THE DIVERSITY OF CARE FARMS AND THEIR MULTIFUNCTIONALITY CONTRIBUTIONS AND PERSPECTIVES FOR NATURE AND LANDSCAPE DEVELOPMENT

Thomas van Elsen, Marie Kalisch 67

SELECTING APPROACHES AND METHODS FOR RESEARCHING GREEN CARE FOR PEOPLE WITH MENTAL ILL HEALTH: SOME RESULTS AND OBSERVATIONS FROM A PILOT STUDY

Joe Sempik 83

HOW TO BE A CARE-FARMER FOR € 73: A SHAREHOLDER SURVEY OF THE FORDHALL COMMUNITY LAND INITIATIVE (UK)

John Hegarty 97

CARE FARMING IN THE UK: RECENT RESEARCH FINDINGS ON THE SCOPE AND RANGE OF CARE FARMS IN THE UK

Rachel Hine, Jo Peacock, Jules Pretty 123

ON-FARM ANIMAL-ASSISTED THERAPY, PEDAGOGY, AND ACTIVITIES

Luisa Demattio, Silke Scholl 137

THE CORRELATION EFFECT OF HORTICULTURAL ACTIVITIES – THE INFLUENCE OF WORKING WITH PLANTS ON HUMAN EXPERIENCES

Konrad Neuberger 153

THE VIEW FROM THE OTHER SIDE: how Green Care could help in mental health

Rex Haigh 167

EFFECTS AS STIMULATION FOR THE GREEN PROGRAMME DEVELOPMENT IN CUDV DRAGA

Irena Borčnik 173

GREEN CARE AND AGRICULTURAL SOCIAL ENTERPRISES IN ITALY

Francesca Durastanti, Silvio Franco, Saverio Senni 185

SOCIAL ENTERPRISE, FARMS AND CARE IN RURAL ENGLAND

Stephen Parsons, Stephanie Masters, Robert Bullard 195

SOCIAL FARMING IN GERMANY: OUTCOMES OF THE NATIONAL EXPERTS MEETING ORGANISED WITHIN THE EUROPEAN SOFAR PROJECT

Marie Kalisch, Thomas van Elsen 207

CONCEPTUALISATION OF THE REGIONAL NETWORK OF SOCIAL FARMS

Katja Vadnal, Jan Ulaga, Valerija Bušan 221

THE FARM AS A PEDAGOGICAL RESOURCE – HEALTH AND LEARNING FROM FARM ACTIVITIES FOR SCHOOL CHILDREN IN NORWAY

Linda Jolly, Erling Krogh 235

EDUCATIONAL PROVISION FOR GREEN CARE IN EUROPE. A FIRST OVERVIEW

Olga Travkina, Bas Pedroli 251